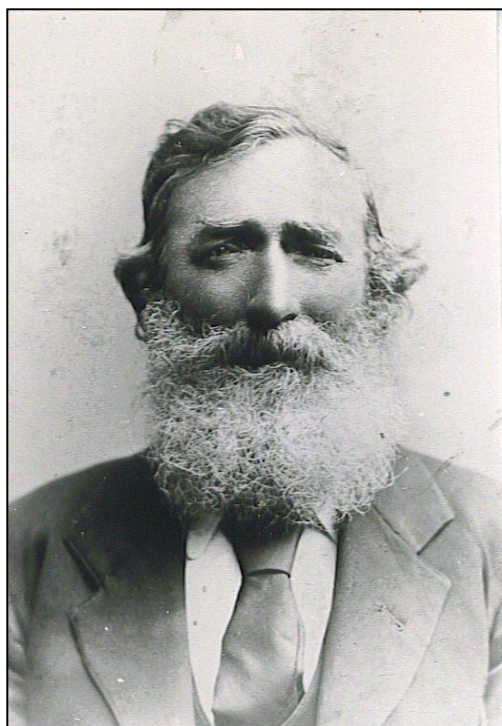


OUR AUSTRALIAN PHILBEYS

George Frederick Philbey (1832-1913), a farm labourer, emigrated from Buckinghamshire to South Australia, arriving in Port Adelaide on the “Surge” in 1852. In 1855, he married Mary Anne Symons (1831-1902). They had nine children. George tried his luck on the Victorian goldfields then returned to South Australia to farm on Kangaroo Flat near Gawler. The family finally moved to clear land and grow wheat in Kulpara on the Yorke Peninsula. The Philbeys prospered, and became pillars of the local community.



Since then, the family has grown and spread. Today, the descendants of George and Mary Philbey number in the hundreds scattered throughout Australia and around the globe.

Family reunions were held in Cecil Plains (Queensland) in 1991, 2009, 2012, 2015 and 2017 welcoming family members from all over Australia. You can see how each event went, along with photos in the following years Chronicle on this website.

The organisers invite all Philbey family descendants in Australia and abroad to come to their reunions. Moreover, they welcome any photographs, documents or other artefacts that could be put on display in the exhibition. Marilyn Philbey has published a book tracing the development of the Philbey family in Australia, copies of which are available at the event.

The invitation also extends to more distant relatives whether Philbey, Philby, Filby, Filbey or however their surnames might be spelt.

FOR CONTACT DETAILS OF REUNION ORGANISERS PLEASE GO THROUGH THIS SITE'S CONTACT EMAIL BUTTON.